



Please
Join
Us

THE PELEE BUZZ

~ Your Island Passport to Nature ~



2018
Season

PELEE ISLAND Ontario, Canada



2018 PELEE BUZZ Events Locations

- 1 Heritage Centre
- 2 Fish Point Parking
- 3 Fish Point PIBO Station
- 4 Ivey Property
- 5 Kraus Property
- 6 Stone Road PIBO Station
- 7 Stone Road Alvar
- 8 FDNR Property
- 9 The Quarry
- 10 Island Unplugged Music Festival

ISLAND FEATURES

- Point of Interest
- Trail
- Hiking Permitted
- Bicycling Permitted

Conservation Lands

- Nature Conservancy of Canada
- Essex Region Conservation Authority
- Ontario Nature
- Provincial Nature Reserve



Middle Island in the distance, seen from the tip of Fish Point photo J. Ambrose

Welcome to Pelee Island

On behalf of Council, I would like to take this opportunity to welcome you to Pelee Island, Ontario. The Township of Pelee is made up of nine islands in Lake Erie; it includes the most southern point in Canada. Being so far south (*the same latitude as northern California!*) provides a setting for excellent agricultural production as well as a Carolinian Canada hub of high biological diversity. Our community hosts the second largest number of endangered species in Canada. We have two globally significant natural areas on the main island with biotic communities that occur nowhere else in the world. There are a number of nature reserves across the island and we welcome you to come explore and experience their special features. While on the island, also enjoy the sandy beaches, restaurants, cultural events, big star-filled skies, and the many hiking trails and cycling routes. Help us celebrate 150 years as a township this year!



Rick Masse, Mayor

Land Acknowledgement

We acknowledge the Traditional, ancestral, unceded territory of Caldwell First Nation; the original people of Pelee Island and its surrounding waters. We recognize and respect the First Nations who are stewards of the land and waters of Turtle Island and who have embraced this stewardship since time immemorial. We would also like to acknowledge other nearby First Nation communities and First Nations across Turtle Island.

Pelee Island offers a large selection of over-night accommodations ranging from inns and bed-&-breakfasts, to cottages and camping.

Visit our website: www.pelee.org/tourism/accommodations

This booklet is printed on FSC certified paper and includes recycled content. Cover collage & booklet design by Scott Hughes Graphic Communication





East Beach in Fall photo S. Hughes

We Invite You to Participate

The **PELEE BUZZ** booklet is a project of the **NATURE ON PELEE GROUP**, a cross section of islanders with an interest in promoting the amazing natural biodiversity and features of Pelee Island, situated in the heart of the Carolinian Zone of Canada. We acknowledge and appreciate our first year start-up funding from the *Gosling Foundation*, participation from our conservation partners, and support from our advertisers. You are invited to participate in any or all of these educational and adventuresome events; please use the contact information for each event to register and join the fun.



Painted Turtles at Lake Henry Marsh photo J. Ambrose



2018 NATURE EVENTS CALENDAR

EARLY SPRING

Saturday, March 24

SALAMANDER NIGHT WALK

Pelee's unique salamanders are active in mid-March, returning to their breeding ponds. Come out with the Trent University researchers and experience this early spring phenomenon! Register with Tom Hossie: thossie@trentu.ca www.thomashossie.ca for details of their research.



Pelee Salamander photo P. Heney

First Ferry to the Island, March 29th

Weather permitting, please check at: www.ontarioferries.com

April 15 – May 31

PIBO BIRD BANDING STATION

Weather permitting, small groups of visitors are welcome 7:00am-11:00am at the *Fish Point* station, access from a narrow trail at the road (watch for a parked car nearby) For more details see: www.pibo.ca



Scarlet Tanager photo S. Onishi

Saturday, April 28

GREAT CANADIAN SHORELINE CLEANUP

Join us again for a cleanup of all the refuse that has collected on our shoreline over winter, and remove these threats to water birds and wildlife. Register with John Ambrose: cercis@sentex.ca or (mobile) 519-724-2174

Great Canadian Shoreline Cleanup photo J. Ambrose



MAY

May 1 – May 31

PIBO BIRD BANDING STATION

Weather permitting, small groups of visitors are welcome 7:00am-11:00am at the *Fish Point* station. For more details see: www.pibo.ca



Barn Swallow photo S. Onishi



Miami Mist photo S. Hughes



Clinton's Wood-fern photo S. Hughes



Southern Ladies' Tresses Orchid photo A. Paul

Thursday-Wednesday, May 10-16
Writing Nature Workshop, Session 1

www.peleeislandwriting.com/2018-spring-retreats.php



Friday-Sunday, May 11-13

17th ANNUAL SPRINGSONG ~ A Celebration of Birds & Birding

Friday noon to Saturday noon - 24-hour Birding Competition, register and start at the Heritage Centre.

Banquet Saturday Night - hosted by Margaret Atwood, with guest speaker Madeleine Thien. Register for banquet here; this event sells out early www.peleeislandmuseum.ca/events

Sunday 9am-noon - Garlic Mustard Pull Join NCC staff to improve habitat for wildlife by pulling invasive garlic mustard! Afterwards, we'll turn some pulled garlic mustard into tasty pesto. This event will be held on the Richard and Beryl Ivey property on East West Rd. For more info to register, website: www.natureconservancy.ca/en/what-you-can-do/conservation-volunteers

Sunday 1-3pm - join the conversation with the birders for a fund-raising BBQ at the **Pelee Island Bird Observatory**, south end of Stone Road: www.pibo.ca

The Pelee Island Bird Observatory

is a non-profit charitable organisation devoted to the study and conservation of birds. The observatory conducts intensive migration-monitoring research and breeding bird studies on Pelee Island from April to November.

PIBO



Mandate:

- Long-term migration monitoring research on Pelee Island as a member of the *Canadian Migration Monitoring Network (CMMN)*.
- Long-term studies of Pelee's significant breeding bird communities.
- To serve as an educational centre for the public, school organisations and the community, and to promote volunteer participation in local conservation projects.
- To highlight the importance of Pelee Island's unique natural heritage.

Website: www.pibo.ca/en

Facebook: www.facebook.com/PeleeIslandBirdObservatory

Twitter: twitter.com/PeleeIslandBird

Instagram: www.instagram.com/peleebird

JUNE

Saturday, June 2

Pelee Island Winery Half Marathon (sold out)

Saturday, June 16, 9:30am

COMMUNITIES, TREES & WILDFLOWERS OF FISH POINT

Join Gerry Waldron (author of *Trees of the Carolinian Forest*) for a walk through Fish Point. See the special plant communities from the shoreline, to the sand spit forest, to the marsh, and the many species of interest that inhabit this peninsula. Meet at the Fish Point parking. Register at: waldronmsc@cdpwise.net

Saturday, June 30 – 'Annual July 1st Parade'
and Pelee Island 150 Celebration



By Land or By Water... While on Pelee, why not take in a tour and explore every little nook and cranny with one of the many knowledgeable island guides, including: **EXPLORE PELEE** (see their ad on p.13 for June discounts) and **PELEE ISLAND CHARTERS**

Biologists conducting native plant inventories on Pelee Island photo S. Hughes





Kraus Wetland & Meadow Habitat Complex photo A. Paul

JULY

Saturday, July 7, 6:30-9:30pm **FOREST BATHING WALK**

A sensory-based mindful walk in nature, with Ben Porchuk, a certified forest therapy guide and recovering scientist. This event features a slow-paced walk with five or six sitting breaks stretched over only 2.5 km., recommended age between 12 and 112. Register at: info@giftotheforest.com, more details at: www.giftotheforest.com



Friday, July 20, 9:30am **WALKING TOUR OF A WETLAND & MEADOW HABITAT COMPLEX**

David Kraus, an Essex District Biology and Science teacher, will take you on a tour of his impressive created habitats on what was flat farmland only a few years ago. Hear how and why different features of this site were built, and think what you could do on your own land! Hear about and observe the wildlife the site has attracted. There is a mowed path in but be prepared to go off path, come with suitable footwear. Meet at Victoria Rd. just south of Homeward Rd. at 9:30am sharp. Register at: david.kraus@publicboard.ca 519-257-8674

Sunday, July 29, 10:00am-1:00pm **BUTTERFLY WALK ON STONE ROAD ALVAR**

Walk with James Kamstra, learn about and see the butterflies of this special habitat. Register with Ontario Nature: seannk@ontarionature.org

AUGUST

Wednesday, August 1, 9:00am **21st PEELE ISLAND BUTTERFLY COUNT**

Participate in this count that has a long history, novices welcome! Meet at the Heritage Centre. Register with Bob Bowles: rbowles@rogers.com



Giant Swallowtail butterflies photo J. Ambrose

Thursday August 2, 9:00am **18th PEELE ISLAND DRAGONFLY COUNT**

same registration as above.



Saturday-Sunday, August 4-5 **5th Annual Island Unplugged Music Festival** www.theislandunplugged.org

Sunday, August 11, 1:00pm **TREE CYCLING TOUR**

Come out and see some of the amazing trees of this island, learn about their ways and how to tell them apart; with John Ambrose, who first came to Pelee Island in the late 1970's because of the high tree diversity while he was Curator at the University of Guelph Arboretum. Register at: cercis@sentex.ca or (mobile) 519-724-2174 • Would you rather see the trees by car? Register and see if there is space, or if not, a separate tour could be scheduled.

August 15 – October 31 **PIBO BIRD BANDING STATION**

Weather permitting, small groups of visitors are welcome 7:00am-11:00am at the *Fish Point* station. For more details see: www.pibo.ca

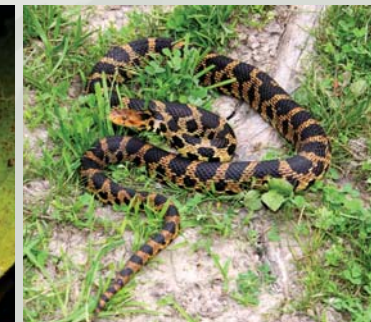
Prickly Pear Cactus
photo S. Hughes



White-marked Tussock Moth Caterpillar
photo S. Hughes



Eastern Fox Snake
photo S. Hughes





Butterfly Milkweed photo J. Ambrose



Black-throated Green Warbler photo S. Onishi



Orange Coneflower photo J. Ambrose



Hummingbird Clearwing Moth Caterpillar photo S. Hughes

SEPTEMBER

September 1 – October 31 PIBO BIRD BANDING STATION

Weather permitting, small groups of visitors are welcome 7:00am-11:00am at the *Fish Point* station. For more details see: www.pibo.ca

Friday-Saturday, September 7-8 11th Annual Heritage Weekend

Friday-Saturday, September 14-16 FALL FLIGHT & HARVEST WEEKEND

A weekend packed with nature events and the *Harvest Dinner*, including a special dinner speaker on insect migration! Register for the dinner at: www.peleelandmuseum.ca/events *Check for the detailed program later.

Some weekend highlights include:

Friday afternoon: cycling tour, trail walks, films, and dinner at the new *Stone House 1891 Restaurant*.

Saturday: Birding at Fish Point, bee demonstration, trail walks, film showing, crafts at *Pelee Art Works*, boat outings, and the *10th Annual Harvest Dinner*, with speaker Gard Otis; “*Butterflies & Dragonflies: The Other Fall Migrants*”

Sunday: Birding at Fish Point, trail walks, boat outings, crafts at *Pelee Art Works*, wrap-up get-together before the 4:00pm ferry.



American Lotus on Lake Henry photo J. Ambrose



LATE FALL

October 1 – November 1 PIBO BIRD BANDING STATION

Weather permitting, small groups of visitors are welcome 7:00am-11:00am at the *Fish Point* PIBO station. For more details see: www.pibo.ca

Saturday, October 20, 27, & November 3 OWL NIGHTS AT PIBO STATION AT THE SOUTH END OF STONE ROAD

Join neighbours and visitors, learn about migrating owls and see the ones caught for banding. Check for details later in the season, *October 20th only if cool weather*: www.pibo.ca (*rain dates Sunday*)



Northern Saw-whet Owl photo S. Onishi

Pheasant Hunts - Thursdays-Saturdays, 8:00am-5:00pm
Oct. 18-20, 25-27; Nov. 1-3, 8-10, 15-17, 22-24, Nov. 29-Dec 1

MID-DECEMBER

CHRISTMAS BIRD COUNT

Check for details and exact date on *PIBO Facebook* or: www.pibo.ca

Last Ferry – Mid-December
Winter daily flights from Windsor begin
Check with: www.ontarioferries.com



Hear Here!

Recognized by *Canadian Heritage* as a significant cultural event nationally, the *Stone & Sky Music & Art Series* is an eclectic and growing season of curated artistic events. Hosting more than 65 resident professional artists each year, weekly concerts are held at 6:00pm in *The Quarry* across from the winery. This acoustically superb and matchless environment boasts a natural limestone amphitheatre festooned with mid-Devonian fossils surrounded by rare and endangered indigenous flora. *Stone & Sky is a big tooth in the smile that is Pelee Island!* Concerts Every Sunday, July 1st – August 19th
For event schedules and further details: www.stoneandsky.org





Sunset on West Shore Road photo S. Hughes

Pelee Island Heritage Centre & Museum



Islands are special microcosms, places of fascinating surprises, neighbourhoods of difference and forever entertaining. '100 Gateways to Pelee' is a unique self-guided out-of-doors audio tour of excellence. Come experience this unsurpassed introduction to the island. Established in 1988, our museum houses a superb collection of island treasures. Focusing on Pelee Island's human and natural history, exhibits include our geology, early Paleo-Indian culture, early settlers and their stewardship of the island, ship-wrecks, crossing the ice, wine history and much more. Browse our bookstore for original publications. Open daily May to October, 10:00am-5:00pm. Located directly across from the ferry terminal. 519-724-2291 www.peleeislandmuseum.ca

The Nature Conservancy of Canada (NCC)

is Canada's leading land conservation organization. Since 1962, NCC has helped to protect more than 2.8 million acres (more than 1.1 million hectares) of ecologically significant land nationwide. On Pelee Island, NCC owns and manages over 1000 acres (400 hectares) of conservation land, focussing on invasive species removal, restoration and wetland creation to improve and expand habitat for native plants and animals. Most of our properties are open to the public for pedestrian access via our trail systems. For hunting or research permits, or for more information, please contact us below.



For volunteer opportunities, check our website at:

www.natureconservancy.ca/en/what-you-can-do/conservation-volunteers

Visit our website: www.natureconservancy.ca/en

Contact us: 1-866-281-5331 Ext. 0 ontario@natureconservancy.ca

TOURS • RENTALS • ACCOMODATIONS • ISLAND SHUTTLE



BIKE & MOTOR TOURS DAILY AT 12PM & 2PM
Custom tours, times & group rates available.
• 10% off all regularly priced bicycle tours for the Month of June when you mention *The Pelee Buzz*

**AMAZING ISLAND DAY-TRIPS
AND VACATIONS!**

519-325-TOUR (8687) www.explorepelee.com

#SOME CHOICES MATTER

And *where you bank* is one of them

Libro Credit Union is a financial institution that keeps your money close to home, where it can do the most good.

libro.ca/somechoicesmatter • 519-733-6521



Free Hot Continental Breakfast
Licensed Lounge, Gym, Indoor Pool, Hot Tub, Sauna
Special Rates for Seniors, Groups & Corporates



201 Erie Street, North, Leamington, ON
www.daysinnleamington.com

519-325-0260



Pets and wildlife need to be kept separate for the benefit of both.

KEEP CATS SAFE & SAVE BIRD LIVES



You can help make your community safer for cats and birds. Learn more at www.catsandbirds.ca



133 Talbot St. East, Leamington, Ontario N8H 1G5



ROOM FEATURES

- Free High Speed Wireless
- Iron/Board Available
- Clock Radio, Coffee Maker in Room
- Jacuzzi Suites
- In Room Cable TV
- Microwave/Fridge Available
- Free Telephone Calls Anywhere Within North America
- Pets Allowed
- Free In-Coming/Out-Going Faxes
- Free Parking
- VIP Room Service
- 24 Hour Guest Services
- Guest Laundry Service Available
- Hair Dryer in Room
- Full Licensed Restaurant on Premises
- Handicapped Room/Facilities

519-326-3265

www.wiglesmotel.com



161 Talbot St. East, Leamington, Ontario N8H 1L8
We offer 20 luxurious, modern & spacious rooms priced for any traveller's budget.

For Reservations Please Call

519-322-5622

www.talbottrailinn.com

We offer the same *Room Features* as in above ad.



THE BIG TREES OF PELEE

A group of us has been talking for some time about how to better recognize the many large heritage trees on Pelee Island. We would like to start compiling a list and map of them this summer. Keep a mental note of your favourite big trees (or a note on your fridge!) and we'll have more information for you soon.

Pin Oak at Mosquito Point Swamp

photo J. Ambrose

a very special thanks to all our conservation partners...



The Gosling Foundation

www.goslingfoundation.org

